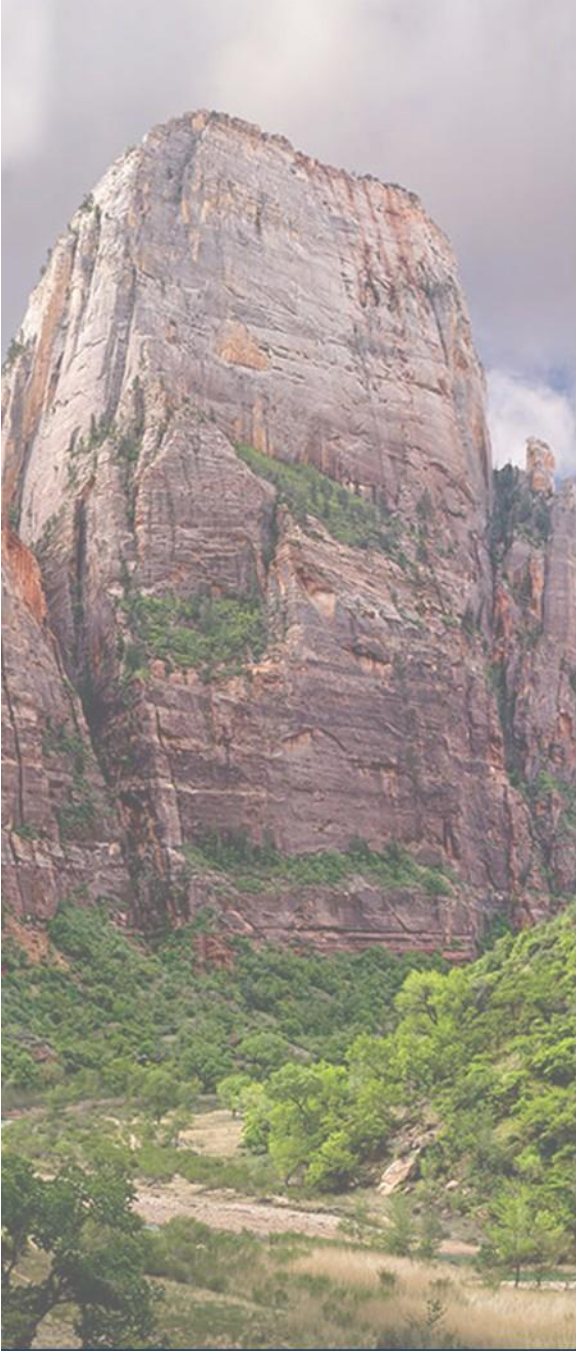




# WELCOME!

April 2, 2026



# April 2026 Agenda

- 12:00 p.m. Welcome & House Keeping
- 12:05 p.m. **Nightingale College: Building Utah's Nursing Workforce from Within**
- Presented by Bonnie Fecowicz & Kyle Brown
- 12:25 p.m. Nightingale College Q&A
- 12:30 p.m. **Utah CTSI, University of Utah: Rural Connections to Research (RCR)**
- Presented by Stacey Peterson
- 12:50 p.m. Utah CTSI, University of Utah Q&A
- 12:55 p.m. Closing



# BUILDING UTAH'S NURSING WORKFORCE FROM WITHIN

*A Partnership Approach to Rural Workforce Transformation*

Presented to the Rural Health Association of Utah

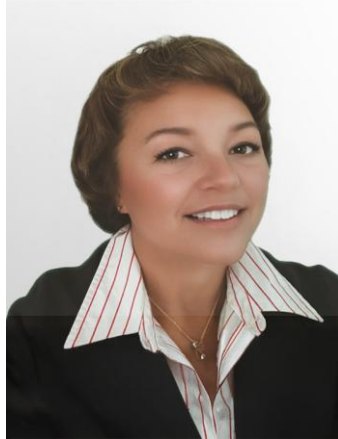
Kyle Brown, BS Regional Account Manager  
Bonnie Fecowicz, MSN, RN, VP, Nursing Workforce Solutions  
Nightingale Solutions

# Meet The Team



**Kyle Brown**

*Director, Workforce  
Development*



**Bonnie Fecowics**

*Vice President*



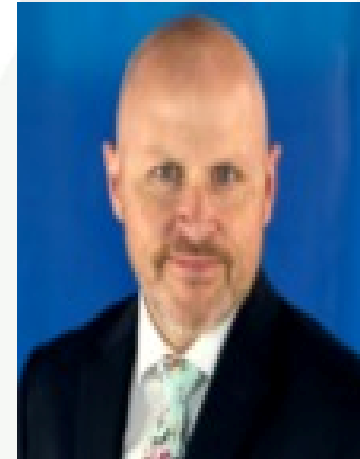
**Andrew Mukisa**

*Director, Solutions*



**David Bradshaw**

*Regional Accounts  
Manager*



**Russell Gerrard**

*Regional Accounts  
Manager*

# THE UTAH REALITY: WHY RECRUITMENT ALONE WON'T WORK

## The Challenge for Rural Utah

**49th**

Utah's rank in nurses per 1,000 population

**~7**

Nurses per 1,000 residents (vs. 9 national)

**1 in 5**

Utah nurses approaching retirement

**3,000+**

Open RN positions across the state

- Rural areas face a 22% nursing shortage vs. 8% in metro areas (HRSA, 2024)
- New RN graduates in Utah have declined, further tightening the pipeline (Lightcast Q1 2025)
- 24 of Utah's 29 counties are rural — yet 75% of the population is in 5 urban counties
- Nurses recruited from outside don't stay — rural retention averages 18 months or less
- Contract labor and travel nurses are a cost multiplier, not a solution

# NIGHTINGALE SOLUTIONS: YOUR PARTNER IN SALT LAKE CITY



## Who We Are

- Nationally accredited nursing education institution headquartered in Salt Lake City, Utah
- 9,700+ students across all 50 states
- Programs spanning PN Diploma through MSN (FNP, PMHNP)
- Accredited by CCNE and NLN CNEA; institutionally accredited by NWCCU
- Online didactic + on-ground clinical at employer partner sites (SOFE model)
- No waitlists — 3 enrollment starts per year
- Concept-based curriculum with VR simulation and at-home lab kits

## The Full CNA-to-MSN Pipeline

### PN Diploma

12 months | \$495/cr | NCLEX-PN prep

### LPN-to-ASN

20 months | \$825/cr | NCLEX-RN prep | #1 in Utah

### BSN Program

32 months | \$655/cr | NCLEX-RN Success Coach

### RN-to-BSN Track

12 months | \$655/cr | 100% online | All 50 states

### MSN FNP

24 months | \$550/cr | Primary care providers

### MSN PMHNP

24 months | \$550/cr | Behavioral health

***Stop Recruiting. Start Building.***

# THE OPPORTUNITY: \$195.7M FOR RURAL UTAH

## Utah RHTP Award: FY2026

- \$195.7 million Year 1 award (Dec 29, 2025)
- Up to \$1 billion over 5 years (FY2026–2030)
- Administered by Utah DHHS, subrecipients to be selected
- 7 initiatives including RISE (workforce expansion) and PATH (prevention)
- CMS-approved use: recruit & retain clinical workforce with 5-year rural commitments

## How Nightingale Aligns with Utah RHTP

### RISE (Workforce)

Full CNA-to-MSN pipeline for rural communities; employer-embedded clinical training

### SHIFT (Infrastructure)

Partner with rural hospitals as SOFE sites; expand clinical training capacity

### PATH (Prevention)

Community health nursing modules; chronic disease management education

### Technology

VR simulation, telehealth clinical supervision, online didactic delivery

*RHAU members are uniquely positioned to advocate for workforce education as a funded RHTP initiative — and Nightingale is ready to partner today.*

# Nightingale Solutions Value

<b>Nightingale Distinction</b>	<b>Benefit to You</b>
White Glove Learner Support	Shortened Timeline for Nurse Readiness
No Waiting List	Increased Learner Motivation
No Prerequisites	Decreased Financial Burden and Program Length
Blended Learning	Accommodates Remote Learners' Locations
Conceptual-Based Curricula	Flexible Thinking, Broad Knowledge Application
Experiential Learning	Stronger Skills, Higher Engagement, Adaptable Learners
Innovative Educational Technology	Improved Engagement, Safety, and Workforce Readiness
Non-Traditional Learner Population	Professionally Mature Nurses, Reflective of Patient Communities
Workforce Planning Partnerships	Sustainable Talent Pipelines and Reduced Turnover

# Utah Tuition Support



Your Nursing Career Starts Today!

## SAVE 30%

BSN tuition for Utah Residents

*Terms & Conditions Apply*



For More Information  
Scan the QR Code or  
visit [Nightingaleutah.com](https://Nightingaleutah.com)  
Kyle Brown  
[KBrown@nightingale.edu](mailto:KBrown@nightingale.edu)

NIGHTINGALE SOLUTIONS



# LET'S BUILD TOGETHER

---

## What Nightingale Brings

- Accredited programs PN through MSN — deployed nationally
- Employer-embedded clinical training (SOFE) at your facilities
- No waitlists, 3 starts/year, online didactic
- NCLEX success coaches and wraparound learner support
- RHTP proposal-ready with multi-state experience
- Headquartered in Salt Lake City — your local partner

## What We Need from You

- Clinical sites — your rural hospitals as SOFE partners
- Advocacy — voice for workforce education in RHTP sub-awards
- Learner identification — your CNAs, LPNs, RNs ready to advance
- Preceptors — experienced nurses to mentor clinical learners
- Feedback — help us tailor programs to rural Utah's needs

***Stop Recruiting.  
Start Building.***



NIGHTINGALE  
SOLUTIONS

# Questions & Next Steps

[bfecowicz@nightingale.edu](mailto:bfecowicz@nightingale.edu)

[kbrown@nightingale.edu](mailto:kbrown@nightingale.edu)



# Nightingale College

Q&A

# Rural Connections to Research (RCR)

Bridging the Gap for Rural Utah

Stacey Peterson, MBA | Utah CTSI, University of Utah



# WHERE ROADS ARE LONG AND ACCESS IS LIMITED:

Rural Connections to Research in Action

Expanding Clinical Research Participation through

Partnerships, Rural Infrastructure, and Decentralized Solutions

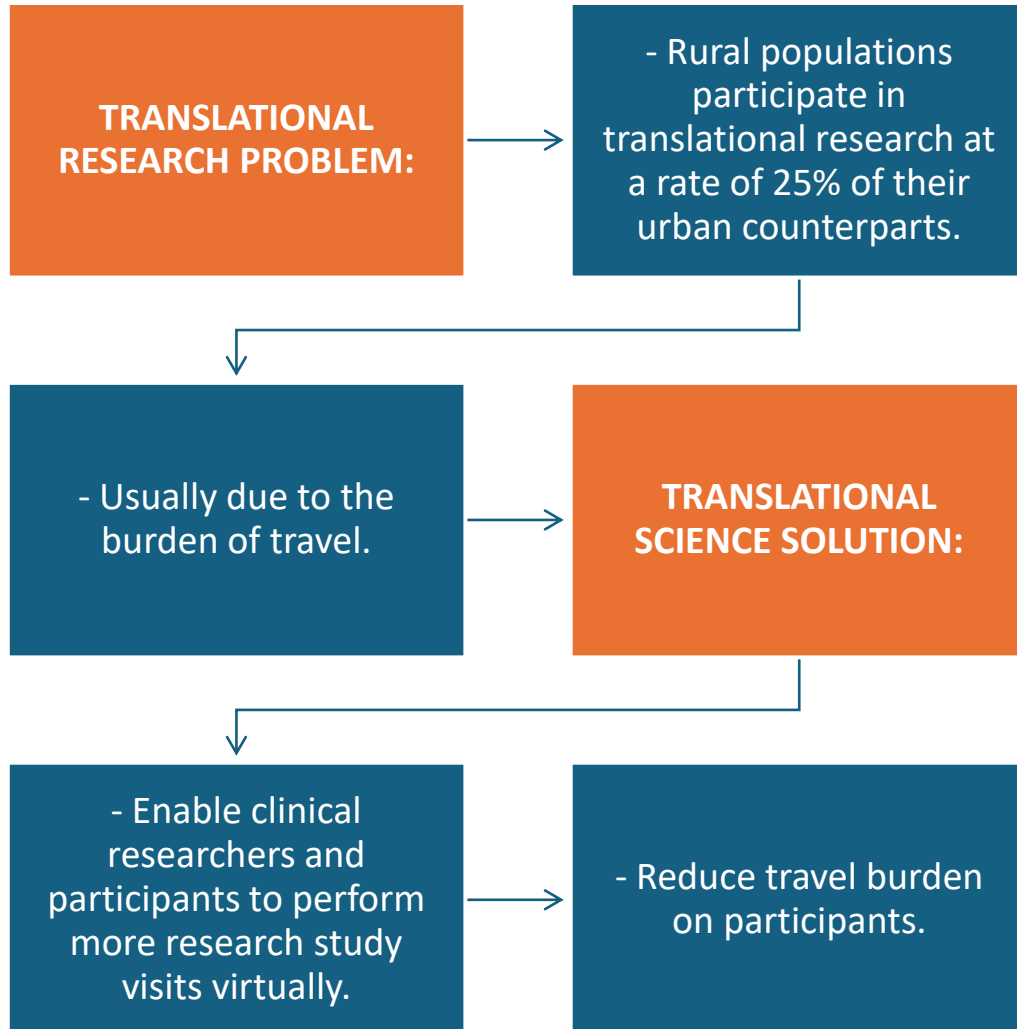
UTAH CTSI  
CLINICAL & TRANSLATIONAL  
SCIENCE INSTITUTE



**RCR**

**U** HEALTH  
UNIVERSITY OF UTAH

# RCR as Translational Science Solution



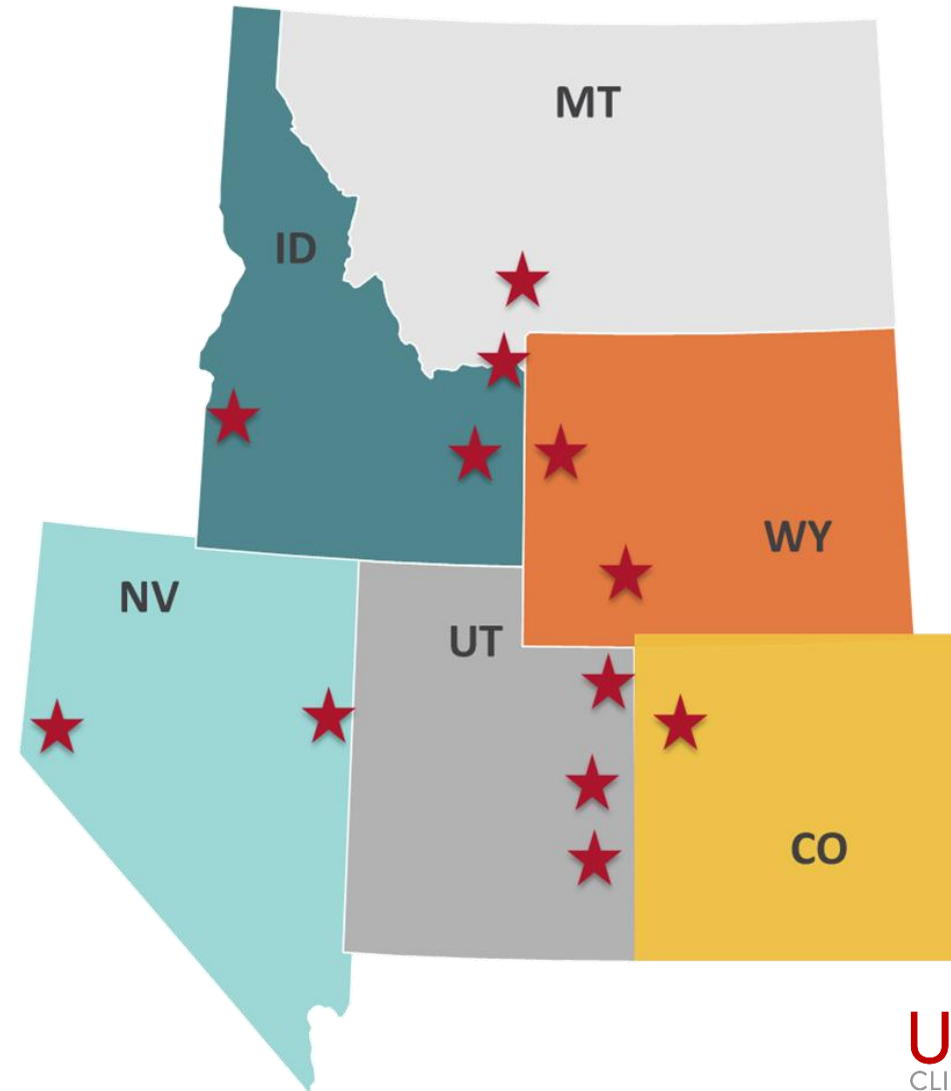
# The Phlebotomy Collective

## Hospitals

Intermountain Health, UT  
Huntsman Cancer Institute, UT  
St. Mary's Regional Hospital, Grand Junction, CO  
Ashton Memorial, Ashton, ID  
Madison Memorial Hospital, Rexburg, ID  
St. Peter's Health, Helena, MT  
Memorial Hospital of Sweetwater, Rock Springs, WY  
St. John's Health, Jackson, WY  
Carson Tahoe Health, Carson City, NV

## Clinics

Island Park Medical Clinic, Island Park, ID  
Intermountain Health, NV  
Intermountain Health, UT  
Ashley Regional Medical Center, Vernal, UT



# The Phlebotomy Collective: A Seamless Workflow



## Local Participants Visit

Participants visit YOUR clinic for routine tasks.



## Standard Tasks

Blood draws, sample processing, vitals



## RCR-Managed Logistics

RCR provides protocols, labels, and shipping kits.



Rural Connections to Research (RCR)

# Why Partner with RCR?

- Keep Patients Local

- Expand Services:  
Offer trial access without new infrastructure.

- Revenue Support: RCR pays a \$200 fee per visit.

# RCR Participant - Leigh Jones



## RCR Phlebotomy Site: Memorial Hospital of Sweetwater Rock Springs, WY



UNIVERSITY OF UTAH  
**HUNTSMAN**  
CANCER INSTITUTE

*"The Rural Connections to Research program has been truly life-changing. Instead of making a five-hour round-trip drive to the Huntsman Cancer Institute, I can now travel just five minutes from home for my research blood draws. This has saved me valuable time, reduced fuel costs, and alleviated the challenges of long-distance travel. I was even able to complete a virtual visit with Dr. Soares, which made participating in the study much easier. I am grateful for the RCR program and confident it will be life-changing not only for me, but for other rural participants who want to be involved in research but are unable to travel the long distances from their homes."*

*Leigh Jones, RCR Participant*



# Rural Clinical Research (RCR) Partner Network

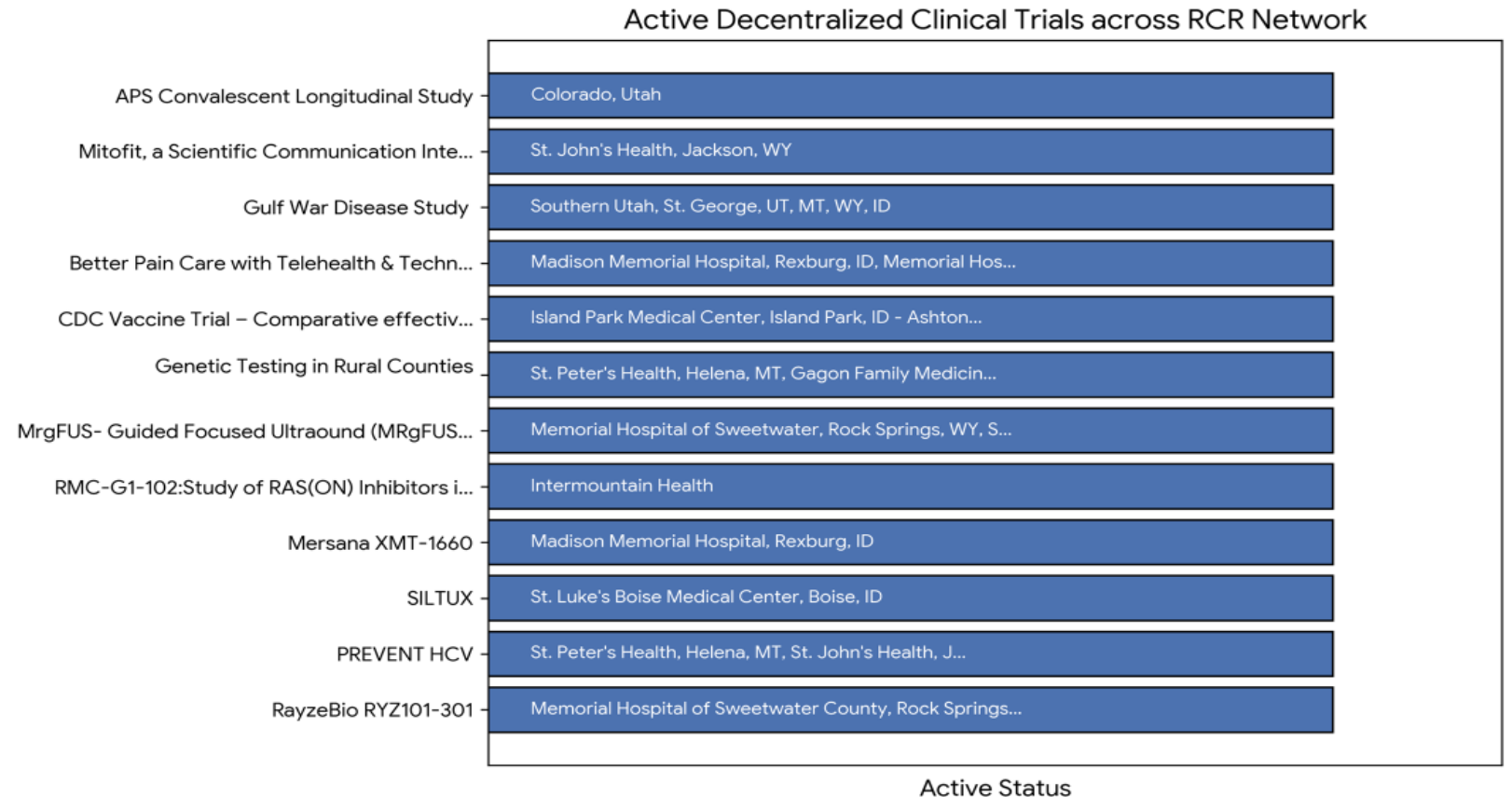
# 6

Mountain West States  
(UT, ID, WY, MT, NV, CO)

# 22+

active community clinics  
and regional hospital partners.

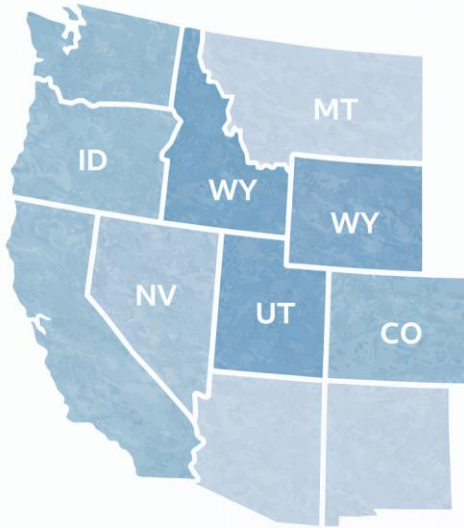
## Active Trials & RCR Partners



# Cross-Disciplinary Discovery

# 13

Departments  
are utilizing the RCR



The University of Utah and Huntsman Cancer Institute  
Departments are utilizing the RCR program to expand trial access.



# Join the RCR Network

Stacey Peterson  
[stacey.peterson@hsc.utah.edu](mailto:stacey.peterson@hsc.utah.edu)





THANK YOU!



# Utah CTSI, University of Utah

## Q&A



# CLOSING

- Next Session is May 7, 2026 at 12:00 p.m.
  - Topics:
    - The HEAL team (Healthy Environment Active Living) – Utah DHHS
    - 2<sup>nd</sup> Topic TBD
- The recordings from today will be available at:  
<https://www.rhau.org/rhau-webinar-series>
- The application to request to present can also be found on the RHAU website, we encourage you to apply to present!
- **THANK YOU FOR ATTENDING!!!**



**May 2026 RSVP**

